



GLI Global User Guide for  
SpiroConnect and Intelligent  
Integration Interface.

[support.numed.co.uk](https://support.numed.co.uk)

## GLI Global User Guide for SpiroConnect and Intelligent Integration Interface.

The new GLI Global predicted values that have been released are part of the latest SpiroConnect Data Manager. First and foremost, there are some significant differences between GLI Global and the older GLI Quanjer data. The first difference is that ethnicity is no longer required, and all patients will be classed as Race Neutral. The second major difference is that there are only predicted values for FVC, FEV1 and FEV1/FVC.

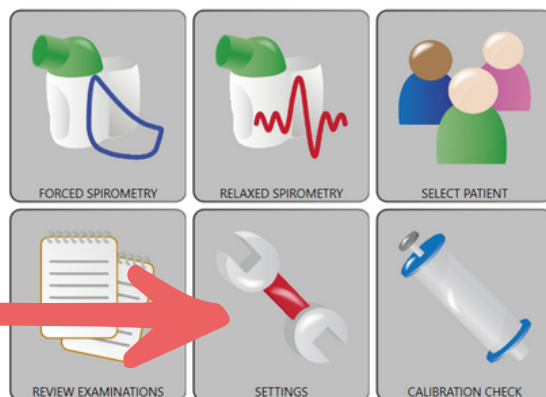
There are two different ways of working with the GLI Global values. Depending on your preferences, you can either choose to use GLI Global at the start of each spirometry examination or use GLI Global for all patients.

### Settings required to use GLI Global for all patients.

To set the SpiroConnect to GLI Global for all patients, follow the steps below.

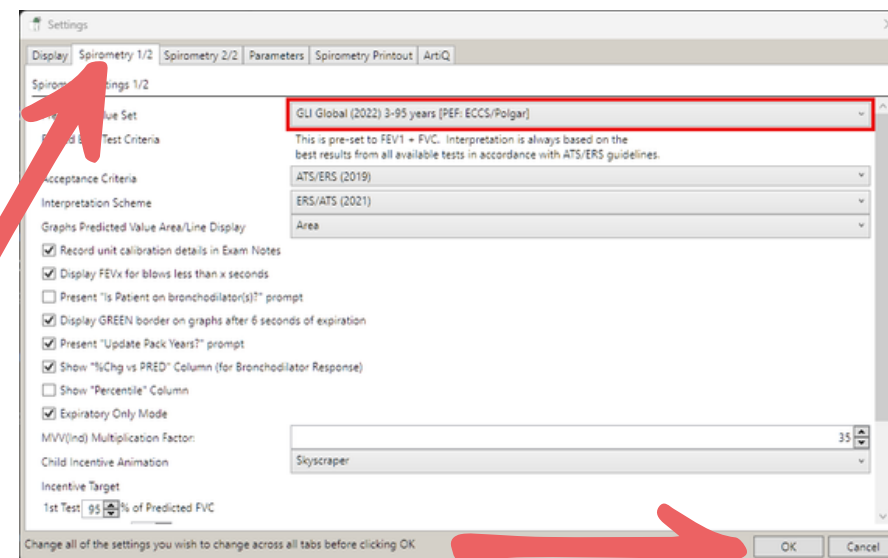
1 Open SpiroConnect Data Manager.

2 Click SETTINGS.



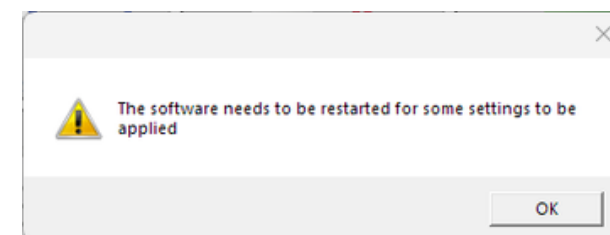
3

Go to Spirometry 1/2 and ensure the Predicted Value Set is GLI Global (2022), all other settings can be set as before. Click OK once done.



4

Click OK.



5

Close down SpiroConnect Data Manager.

6

Follow the steps below when starting your examination.

Please see the guide, [SpiroConnect Settings and Database Location Guide](#) for information on our recommended settings using GLI 2012, then follow the steps below to start your examination.

## Starting your spirometry examination.

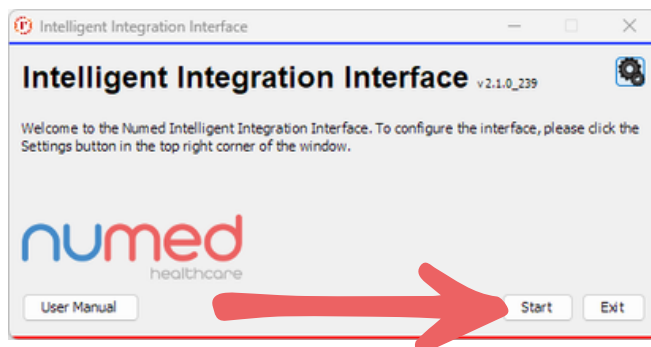
Follow the steps below to see how to start your examinations with the Intelligent Integration Interface.

1 Have your patient open in your clinical system.

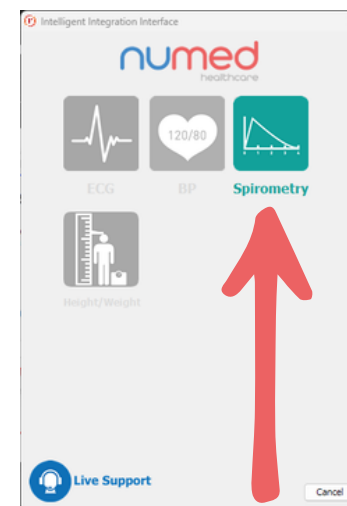
2 Launch the Intelligent Integration Interface.



3 Click Start.



4 Click Spirometry.



5 Update the Height, Weight and Smoking Status of your patient. **Ensure that Ethnic Origin is set to Unknown.** Then click Yes.

6 If your patient is an ex or current smoker, ensure you set the Pack Years on this screen, then if needed, set Predicted Value Set from GLI 2012 to GLI Global and the Ethnic Origin to Race Neutral. Then click OK.

From this point on, you will be able to continue as normal with your examination.

**Keeping your service  
running smoothly**

**numed** | Dedication  
healthcare | Innovation  
Trust